

Manual Transmission Unable to Select Second, Fourth, and/or Sixth Gear

Service Category Drivetrain

Section Manual Transmission/Transaxle

Market USA

Toyota Supports
 ASE Certification 

Applicability

YEAR(S)	MODEL(S)	ADDITIONAL INFORMATION
2024	Tacoma	

Introduction

Some 2024 model year Tacoma vehicles equipped with a RC60F manual transmission / transaxle may exhibit a condition where the vehicle is unable to shift into second, fourth, and/or sixth gear but is able to shift into all other gears. Further inspection shows signs of cracking from the floor shift control shift lever retainer sub-assembly housing. To address this condition, the manual transmission assembly needs to be replaced. Follow the Repair Procedure in this bulletin to address this condition.

Production Change Information

This bulletin applies to vehicles produced **BEFORE** the Production Change Effective VINs shown below.

MODEL	PLANT	DRIVETRAIN	ENGINE	PRODUCTION CHANGE EFFECTIVE VIN
Tacoma	TMMGT	4WD	T24A-FTS	3TYJBAJN#RT028040 3TYLE5JN#RT028040 3TYLB5JN#RT028040 3TYKE5JN#RT028040

Manual Transmission Unable to Select Second, Fourth, and/or Sixth Gear

Warranty Information

OP CODE	DESCRIPTION	TIME	OFF	T1	T2
TC2405	R & R Manual Transmission Assembly	3.8	33030-04080	25	16

APPLICABLE WARRANTY

- This repair is covered under the Toyota Powertrain Warranty. This warranty is in effect for 60 months or 60,000 miles, whichever occurs first, from the vehicle's in-service date.
- Warranty application is limited to occurrence of the specified condition described in this bulletin.

Parts Information

PART NUMBER		PART NAME	QTY
PREVIOUS	NEW		
33030-04080	33030-04080	Transmission Unit Assy	1

Repair Procedure

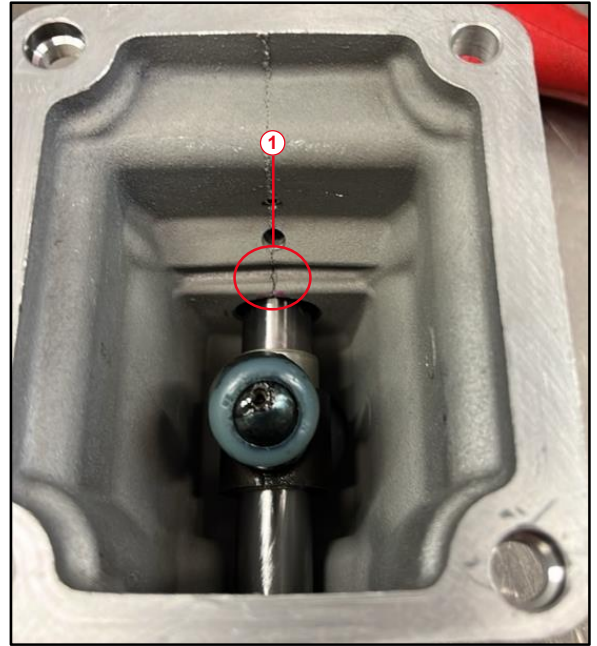
1. Confirm the condition exists.
Does the vehicle exhibit a condition where the vehicle is unable to shift into second, fourth, and/or sixth gear but is able to shift into ALL other gears?
 - **YES** — Continue to step 2.
 - **NO** — This bulletin does NOT apply. Continue diagnosis using the applicable Repair Manual.
2. Remove the manual transmission assembly.
Refer to TIS, applicable model and model year Repair Manual:
 - [2024](#) Tacoma:
Drivetrain – RC60F (Manual Transmission / Transaxle) – Manual Transmission Assembly – Removal
3. Remove the floor shift control shift lever retainer sub-assembly.
Refer to TIS, applicable model and model year Repair Manual:
 - [2024](#) Tacoma:
Drivetrain – RC60F (Manual Transmission / Transaxle) – Manual Transmission Unit – Disassembly

Manual Transmission Unable to Select Second, Fourth, and/or Sixth Gear

Repair Procedure (continued)

4. Inspect the floor shift control shift lever retainer sub-assembly for the cracking condition.
Does the retainer show signs of cracking as shown in Figure 1?
 - **YES** — Continue to step 5.
 - **NO** — This bulletin does NOT apply. Continue diagnosis using the applicable Repair Manual.

Figure 1. Floor Shift Control Shift Lever Retainer Sub-Assembly



1	Example of Retainer Cracking
----------	-------------------------------------

5. Replace the manual transmission assembly.
Refer to TIS, applicable model and model year Repair Manual:
 - [2024](#) Tacoma:
Drivetrain – RC60F (Manual Transmission / Transaxle) – Manual Transmission Assembly – Installation
6. Test drive the vehicle and confirm the condition no longer exists.